

MONTHLY MEMBERSHIP PROGRESS REPORT

LOCATION INDIA

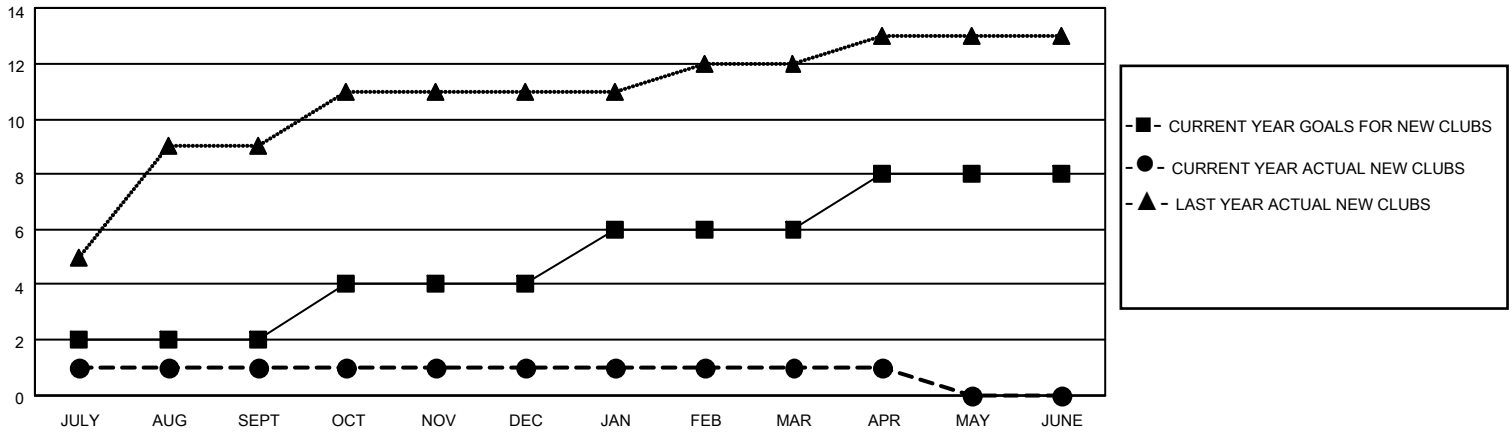
District 321 F

Results as of: 4/30/2023

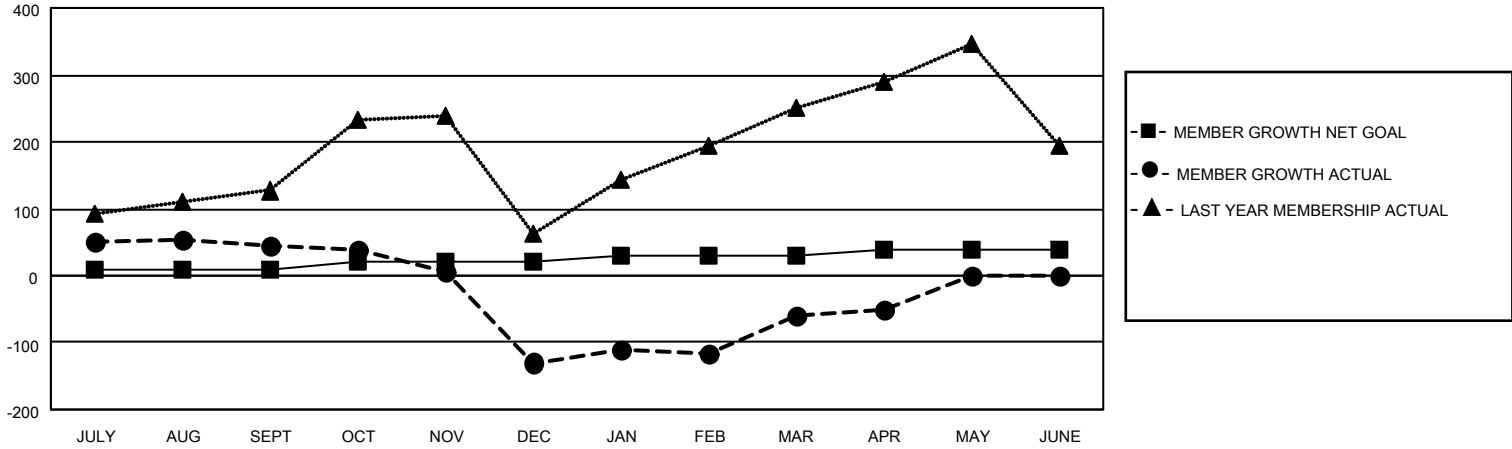
Clubs			
RESULTS FOR 2022-2023			
QUARTER	NEW CLUB GOAL	NEW CLUBS	DROPPED CLUBS
JULY/AUG/SEPT	2	1	0
OCT/NOV/DEC	2	0	4
JAN/FEB/MAR	2	0	1
APR/MAY/JUNE	2	0	0

Members			
RESULTS FOR 2022-2023			
QUARTER	MEMBER GROWTH NET GOAL	MEMBER GROWTH ACTUAL	DROPPED MEMBERS ACTUAL (including transfers)
JULY/AUG/SEPT	10	169	100
OCT/NOV/DEC	10	35	203
JAN/FEB/MAR	10	230	110
APR/MAY/JUNE	10	42	27

GOALS AND ACTUAL NEW CLUBS CUMULATIVE



GOALS AND ACTUAL MEMBERS CUMULATIVE



DROPPED CLUBS: 5

83 CLUBS OF 153 ADDED 1 OR MORE NEW MEMBERS

GENDER DISTRIBUTION

DROPPED MEMBERS

DECEASED	9
CLUB CANCELLED	67
OTHER	364
TOTAL	440

[CLICK HERE FOR CUMULATIVE MEMBERSHIP DATA](#)

MALE	3,782 (84.31%)
FEMALE	702 (15.65%)
NON BINARY	0 (0.00%)
PREFER NOT TO ANSWER	2 (0.04%)

TOTAL FAMILY UNIT MEMBERS 1,892

FAMILY MEMBERS PAYING HALF DUES 1,241